



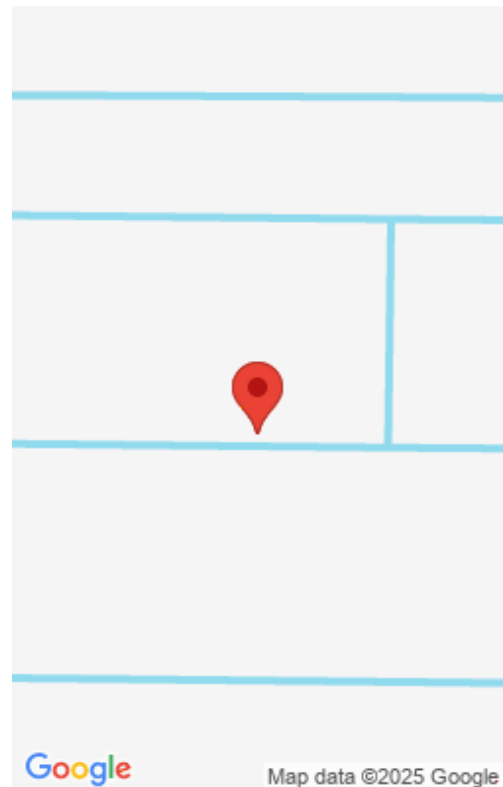
\$490,000

**1114 BLESSED ISLES DRIVE, PALM BAY, FL,
32907**

<https://austingarnerrealestate.com>

Beautiful 3/3 /3 car garage in Brevard's premier 55+ community

- 3 beds
- 3 baths
- Single Family Residence
- Residential
- Active
- 2470 sq ft



Basics

Category: Residential
Status: Active
Bathrooms: 3 baths
Lot size: 0.17 sq ft
Subdivision Name: The Timbers at Everland
Lot Size Acres: 0.17 acres

Type: Single Family Residence
Bedrooms: 3 beds
Area: 2470 sq ft
Year built: 2025
Bathrooms Full: 3
County: Brevard

Building Details

Construction Materials: Block, Concrete
Heating: Electric, 1
Stories: 1

Sewer: Public Sewer
Current Use: Residential

Amenities & Features

Utilities: Cable Available, Sewer Connected, Water Connected
Garage Spaces: 3, 1
Lot Features: Other

Parking Features: Other
WaterSource: Public,
Cooling: Central Air

Fees & Taxes

Association Fee Frequency: Monthly

School Information

HighSchool: Heritage
Elementary School: Discovery

Middle Or Junior School: Central





Miscellaneous

Listing Terms: Cash, Conventional, FHA, VA Loan **Special Listing Conditions:** Standard



Courtesy of

List Office Name: RE/MAX Elite

