



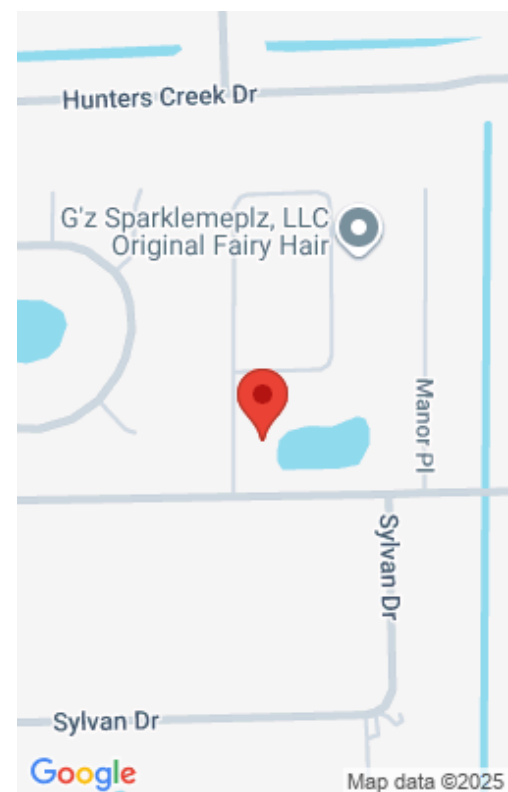
**\$449,000**

## **602 DUNDEE CIRCLE, MELBOURNE, FL, 32904**

<https://austingarnerrealestate.com>

Step into the home of your dreams with this meticulously remodeled property with stunning vinyl flooring throughout. Updated kitchen featuring exquisite granite countertops, complemented by a home theater for your entertainment pleasure. Recent upgrades include a new roof (installed in 2023), hurricane-rated sliding doors (2024), and an impact-rated front door, all paired with newer windows [...]

- 3 beds
- 2 baths
- Single Family Residence
- Residential
- Active
- 2313 sq ft



---

# Basics

<b>Category:</b> Residential	<b>Type:</b> Single Family Residence
<b>Status:</b> Active	<b>Bedrooms:</b> 3 beds
<b>Bathrooms:</b> 2 baths	<b>Area:</b> 2313 sq ft
<b>Lot size:</b> 0.35 sq ft	<b>Year built:</b> 1979
<b>Subdivision Name:</b> Westwood	<b>Bathrooms Full:</b> 2
<b>Lot Size Acres:</b> 0.35 acres	<b>Zoning:</b> Residential
<b>County:</b> Brevard	

---

# Building Details

<b>Construction Materials:</b> Frame, Brick	<b>Sewer:</b> Septic Tank
<b>Heating:</b> Central, 1	<b>Current Use:</b> Residential
<b>Stories:</b> 1	<b>Roof:</b> Shingle
<b>Levels:</b> One	

---

# Amenities & Features

<b>Laundry Features:</b> In Garage	<b>Flooring:</b> Tile, Vinyl
<b>Utilities:</b> Cable Connected, Electricity Connected, Water Connected	<b>Parking Features:</b> Attached
<b>Garage Spaces:</b> 2, 1	<b>WaterSource:</b> Public,
<b>Appliances:</b> Dishwasher, Electric Range, Microwave, Refrigerator	<b>Interior Features:</b> In-Law Floorplan, Primary Bathroom - Shower No Tub, Guest Suite
<b>Lot Features:</b> Few Trees, Irregular Lot, Sprinklers In Front, Sprinklers In Rear	<b>Cooling:</b> Central Air

---

# Fees & Taxes



**Tax Assessed Value:** \$2,101.36

---

## Miscellaneous

**Road Surface Type:** Asphalt      **Listing Terms:** Cash, Conventional, FHA, VA Loan  
**Special Listing Conditions:** Standard   **Pets Allowed:** Yes

---

## Courtesy of

**List Office Name:** Blue Marlin Real Estate

